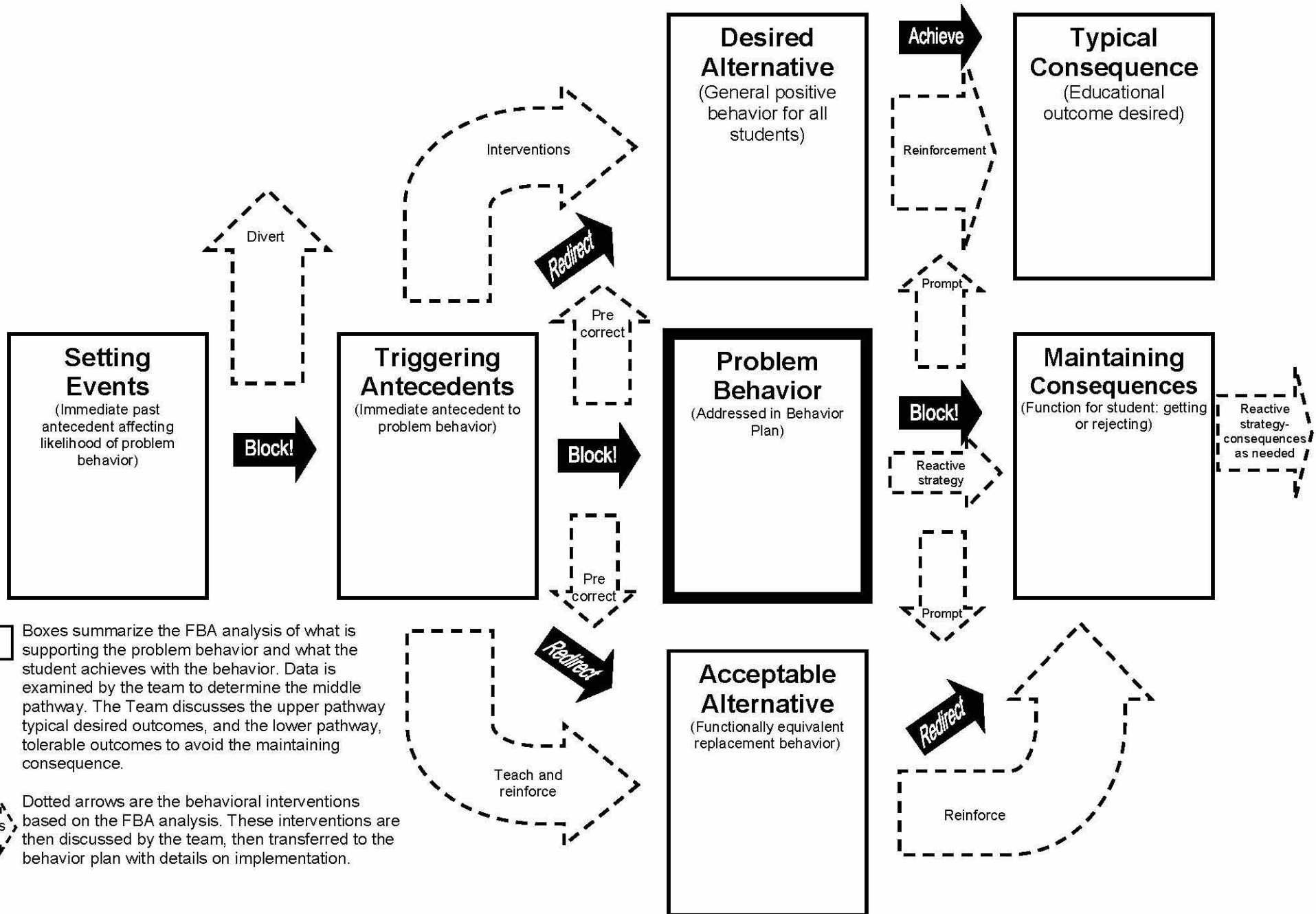


# THREE-PATHWAY FUNCTION-BASED SUMMARY: FBA AND INTERVENTION PLANNING



**FBA** Boxes summarize the FBA analysis of what is supporting the problem behavior and what the student achieves with the behavior. Data is examined by the team to determine the middle pathway. The Team discusses the upper pathway typical desired outcomes, and the lower pathway, tolerable outcomes to avoid the maintaining consequence.

**Interventions** Dotted arrows are the behavioral interventions based on the FBA analysis. These interventions are then discussed by the team, then transferred to the behavior plan with details on implementation.